

Sidemount Plus Fan Box[®]

Model Numbers: 01240/01240-11

For New Construction or Remodel Work

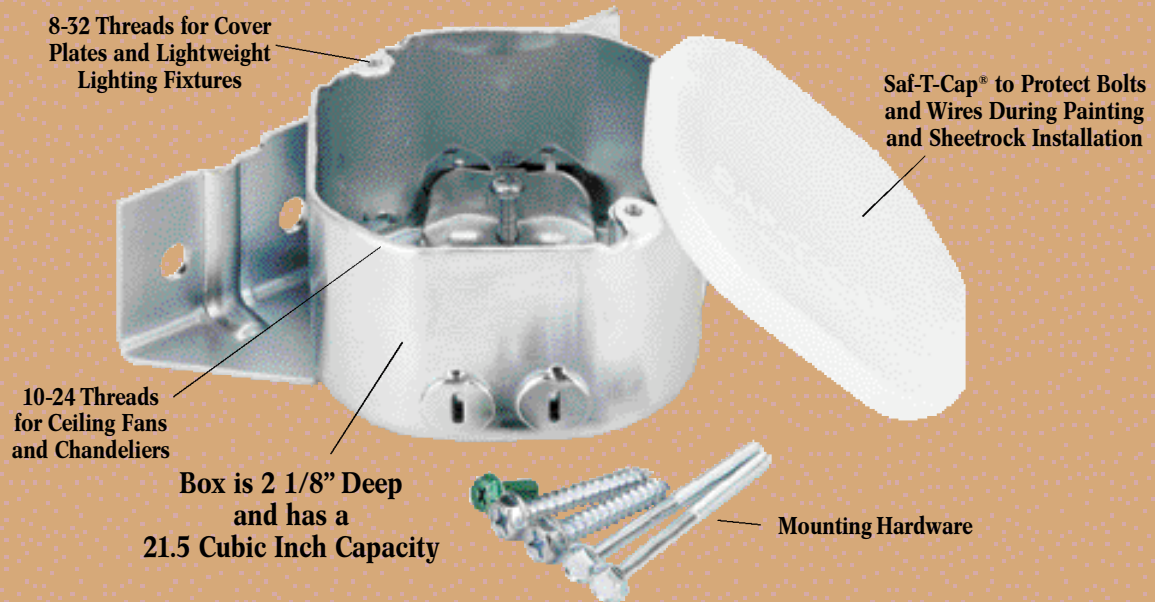
- Sidemount Bracket is Removable for Easy Replacement of Existing Nail-On Boxes without Attic Access
- Fits All Ceiling Fans
- Features Dual Mounting Capabilities
- 3 Knockouts for Conduit or Romex
- 2 Romex Clamps
- Includes Mounting Hardware and Instructions
- For Fixture Support of 70 Lbs. or Less
- Acceptable for Fan Support of 70 Lbs. or Less



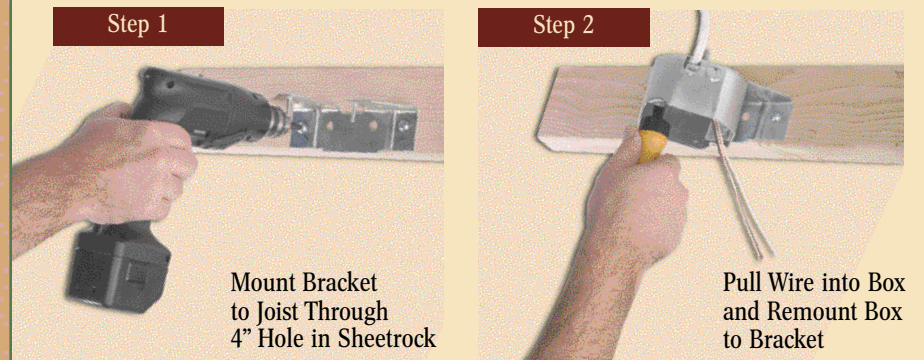
**US PATENT NO.
5,860,548**

01240 is Individually Packaged, 6 Per Cut Case
01240-11 is Bulk Packed, 12 Per Cut Case

SUPPORT
BRACES & BOXES



Installation Illustration



Meets or Exceeds UL Standards Regarding Exposed Threads Within Box. Meets or Exceeds NEC[®] Safety Codes.

Sidemount Plus Fan Box®



Model Numbers: 01250/01250-11/01252-11

For New Construction or Remodel Work

- Sidemount Bracket is Removable for Easy Replacement of Existing Nail-On Boxes without Attic Access
- Fits All Ceiling Fans
- Features Dual Mounting Capabilities
- Includes Mounting Hardware and Instructions
- For Fixture Support of 70 Lbs. or Less
- Acceptable for Fan Support of 70 Lbs. or Less

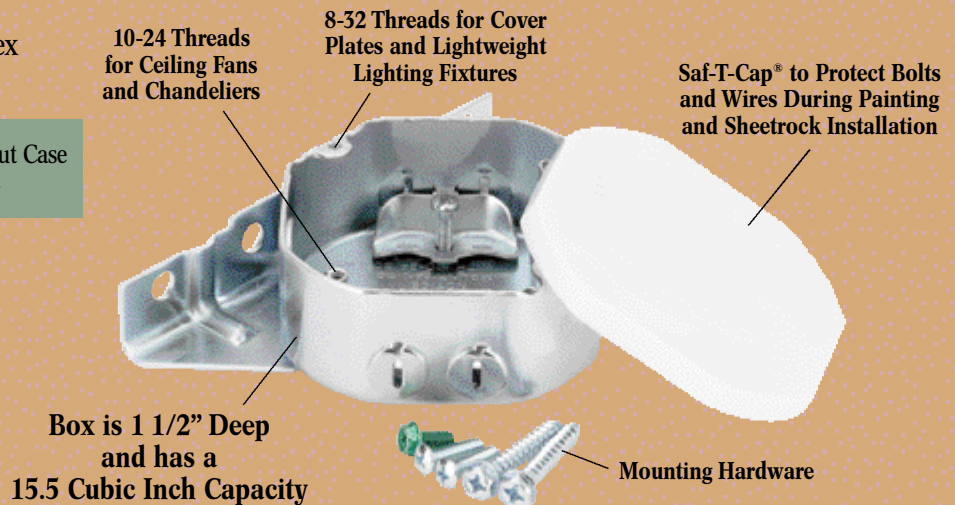


**US PATENT NO.
5,860,548**

01250 & 01250-11

- 3 Knockouts for Conduit or Romex
- 2 Romex Clamps

01250 is Individually Packaged, 24 Per Cut Case
01250-11 is Bulk Packed, 24 Per Cut Case

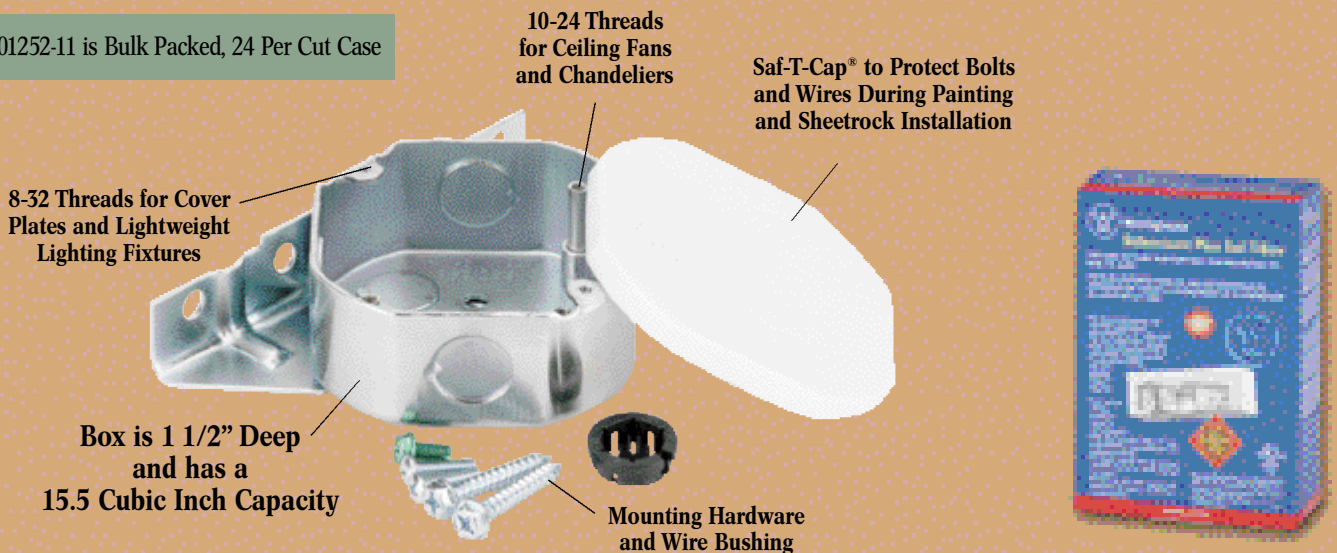


SUPPORT
BRACES & BOXES

01252-11

- 6 Knockouts for Conduit or Romex

01252-11 is Bulk Packed, 24 Per Cut Case



Meets or Exceeds UL Standards Regarding Exposed Threads Within Box. Meets or Exceeds NEC® Safety Codes.